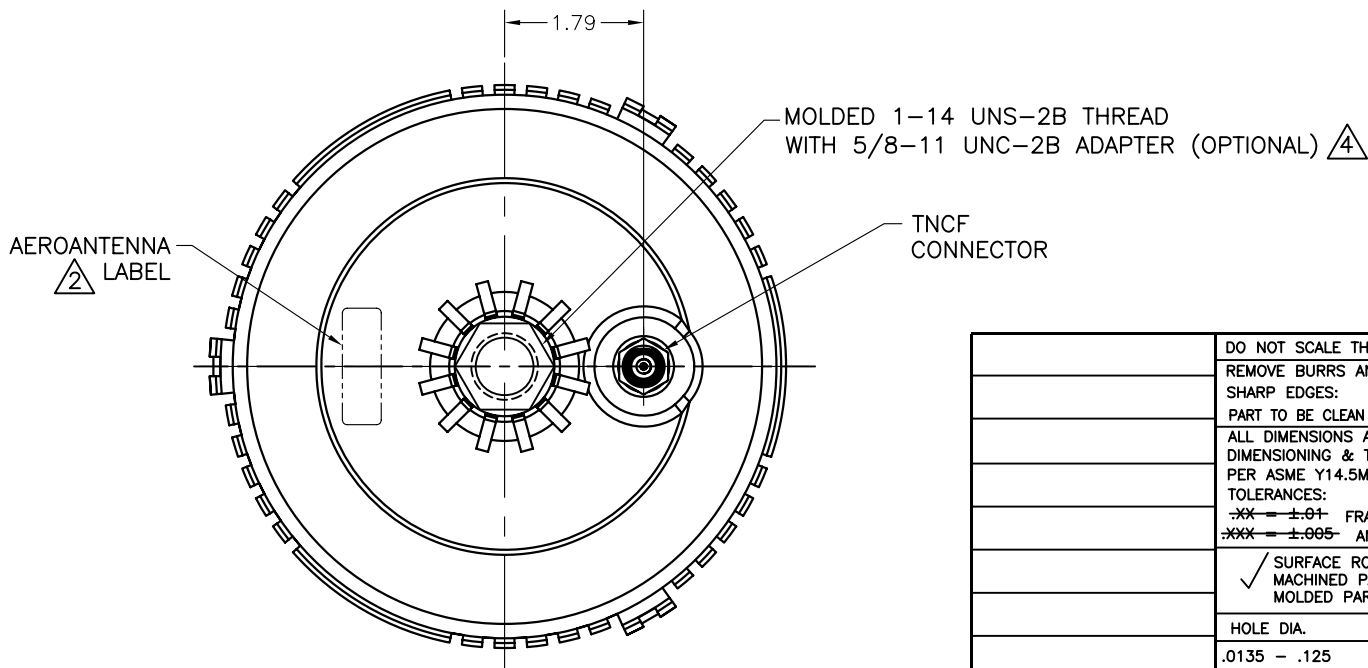
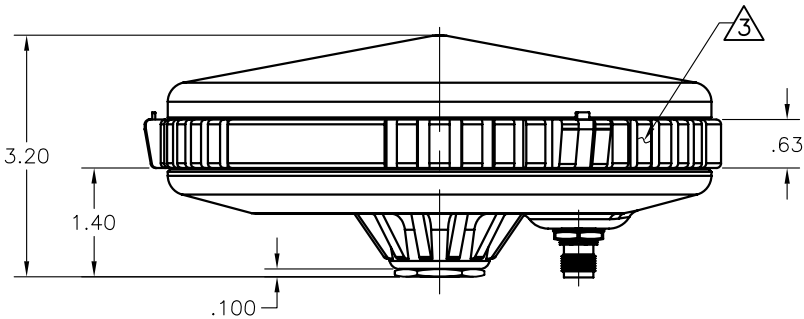
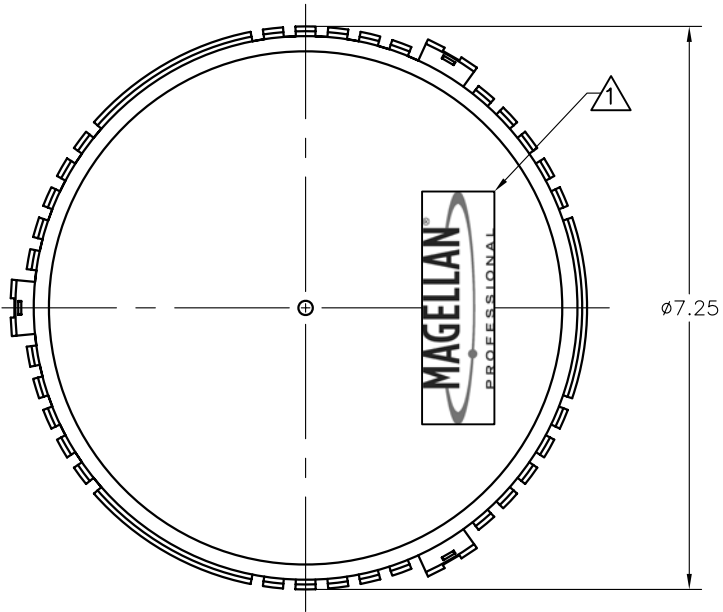


PROPRIETARY NOTICE: This document contains proprietary information of AeroAntenna Technology, Inc. (AAT). Neither the document nor said proprietary information shall be published, reproduced, copied, disclosed or used for any purpose other than consideration of this document without the express written permission of a duly authorized representative of said AeroAntenna Technology, Inc.

- NOTES: UNLESS OTHERWISE SPECIFIED.
- 1 LOGO ORIENTATION.
 - 2 LABEL SIZE, SHAPE, AND CONTENTS SUBJECT TO CHANGE WITHOUT NOTICE.
 - 3 BUMPER COLOR: BLACK.
 - 4 INSERT NOT INCLUDED WITH ANTENNA.
 - 5. TOLERANCES: .XX ± .03
.XXX ± .010



REVISIONS			
SYM	DESCRIPTION	DATE	APPROVED
1	ENGINEERING RELEASE	09/17/08	

SPECIFICATION:

FREQUENCY: 1590 ±25 MHz
1238 ±21.5 MHz
POLARIZATION: RIGHT HAND CIRCULAR
AXIAL RATIO: 3 dB MAX @ BORESIGHT
RADIATION COVERAGE: TBD

AMPLIFIER:
NOISE FIGURE: 2.5 dB MAX
IMPEDANCE: 50 OHMS
VSWR: ≤2.0:1
BAND REJECTION: 20 dB @ 250 MHz
VOLTAGE: +4.25 TO +15 VDC
CURRENT: 65 mA MAX
CONNECTOR: TNCF BULKHEAD
WEIGHT: 1.36 LBS
OPERATING TEMP: -40°C TO +75°C
DESIGNED TO: DO-160

PART NO. DESIGNATION:

AT1675-7MW-XXXX-XXX-XX-XX-NM-R

CUSTOMER M = MAGELLAN
COLOR W = WHITE
CONNECTOR TNCFB = TNCF BULKHEAD
CABLE LENGTH 000 = IN INCHES

RoHS COMPLIANT R = RoHS COMPLIANT
MAGNET NM = NO MAGNET
GAIN (± 3 dB) 38 = 38 dB (55 mA)
VOLTAGE RG = +4.25 to +15 VDC

STANDARD MODEL= AT1675-7MW-TNCFB-000-RG-38-NM-R

DO NOT SCALE THIS DRAWING REMOVE BURRS AND BREAK SHARP EDGES: PART TO BE CLEAN AND OIL FREE ALL DIMENSIONS ARE IN INCHES DIMENSIONING & TOLERANCING PER ASME Y14.5M-1994 TOLERANCES: XX = ±.01 FRACT = ±1/32 XXX = ±.005 ANG. = ±1/2° ✓ SURFACE ROUGHNESS MACHINED PARTS V63 MOLDED PARTS V32		DRAWN V. GRINEVICH	09/17/08	 AS9100 CERTIFIED CO.	
HOLE DIA. TOLERANCE .0135 - .125 +.004/-0.001 .126 - .250 +.005/-0.001 .251 - .500 +.006/-0.001 .501 - .750 +.008/-0.001		CHECKED			
NEXT ASSY		ENGR S. VALDES	10/20/08	TITLE L1/L2 GPS + GLONASS ANTENNA	
		MFG		SIZE B CAGE CODE OUVG2 DRAWING NO. AT1675-7M REV 1	
		Q.A.		SCALE NONE I:\CAD\AT1675\ -07M\AT1675-7M_1 SHEET 1 OF 1	
		APPROVED			
		DRAWN IN CAD			